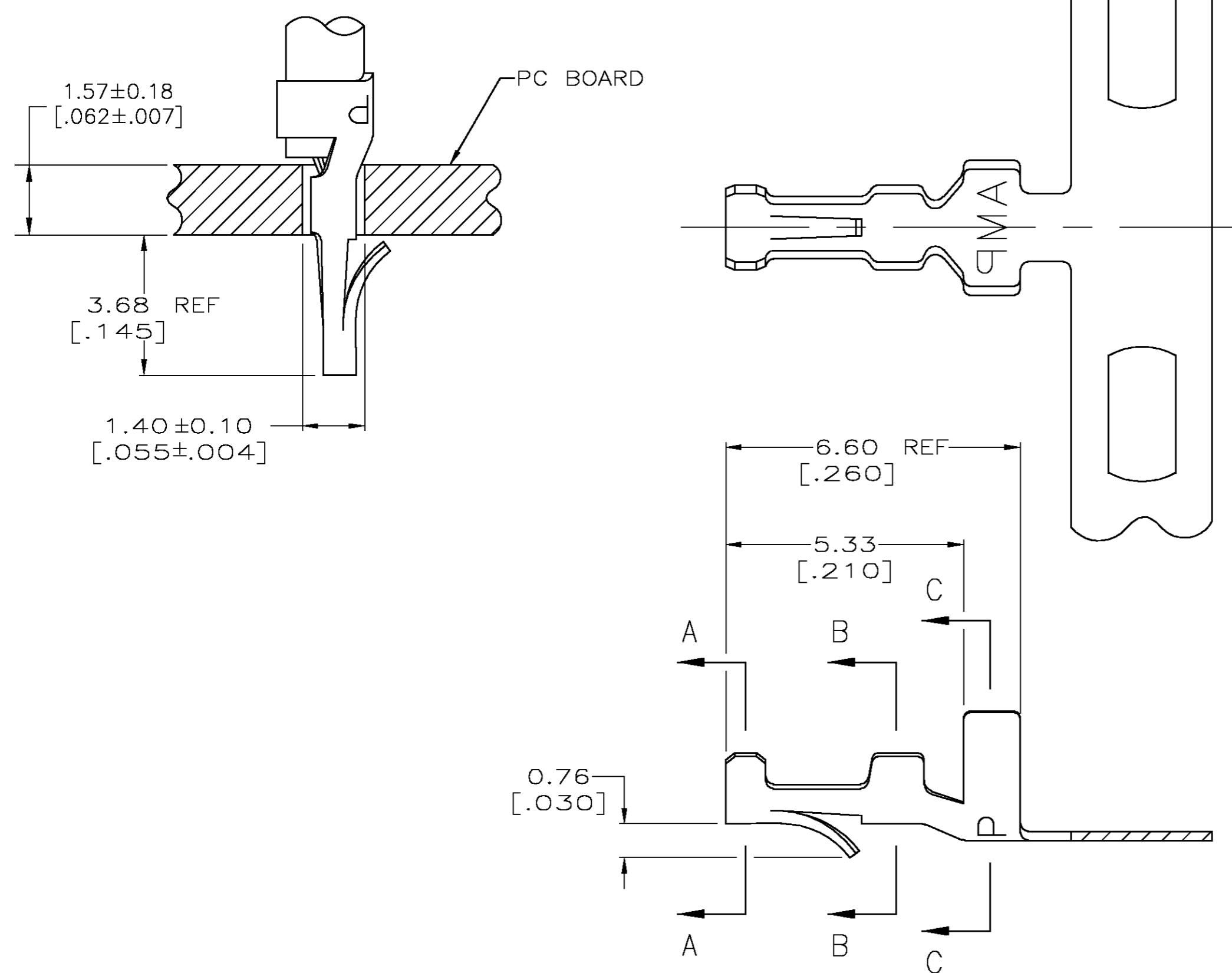
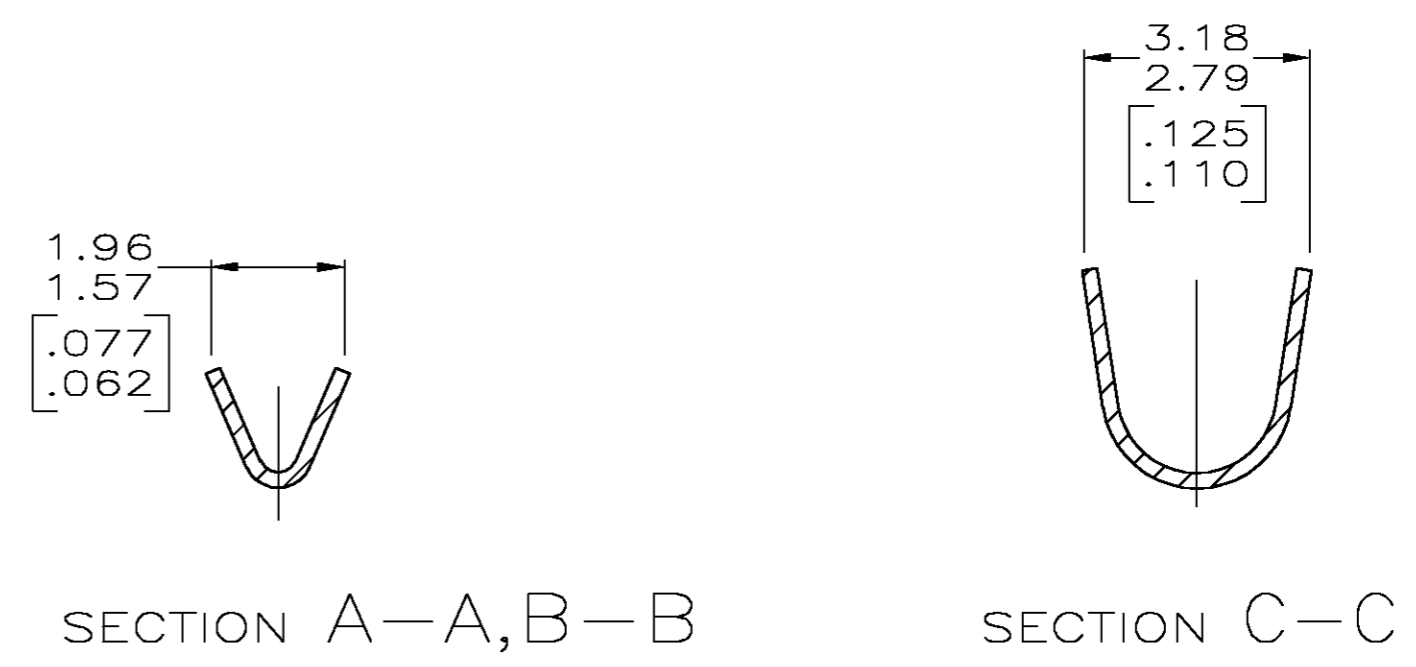


THIS DRAWING IS UNPUBLISHED. RELEASED FOR PUBLICATION  
 © COPYRIGHT BY TYCO ELECTRONICS CORPORATION. ALL RIGHTS RESERVED.

LOC		DIST		REVISIONS			
CM	00	P	LTR	DESCRIPTION	DATE	DWN	APVD
		P		REV PER ECN 0G3B-0383-03	21AUG03	SC	JE



- PARTS COMPLY WITH AMP SOLDERABILITY SPEC 109-11-3.
- PARTS CAPABLE OF BEING APPLIED BY AMPOMATOR.
- 0.00508 [.000200] MIN BRIGHT TIN-LEAD.
- 0.00381 [.000150] MIN BRIGHT TIN-LEAD OVER 0.00127 [.000050] MIN NICKEL.
- WIRE RANGE: 0.12 - 0.4 mm<sup>2</sup> (26 - 22 AWG).
- INSULATION RANGE: 1.02 - 2.54 [.040 - .100] DIA.
- DIMENSIONS IN BRACKETS ARE IN INCHES.
- 0.00508 [.000200] MIN BRIGHT TIN.



MINI	△8	0.20[.008] PH BRZ	3-640401-1
MINI	△4	0.20[.008] PH BRZ	640401-3
MINI	△3	0.20[.008] PH BRZ	640401-1
APPLICATOR	FINISH	MATERIAL	PART NO

THIS DRAWING IS A CONTROLLED DOCUMENT.		DWN S. CARPENTER 21AUG2003	Tyco Electronics Corporation Harrisburg, PA 17105	
DIMENSIONS: INCHES		CHK J. ELLIS 21AUG2003	NAME MINI AMP-IN™	
TOLERANCES UNLESS OTHERWISE SPECIFIED:		APVD J. ELLIS 21AUG2003	APPLICATION SPEC 114-1016	RESTRICTED TO -
MATERIAL SEE TABLE		FINISH SEE TABLE	WEIGHT A2 00779	DRAWING NO C=640401
		CUSTOMER DRAWING	SCALE 10:1	SHEET 1 OF 1 REV P

**METRIC**

A/C BUSINESS GROUP 3323 177-34 RALPH VESTAL